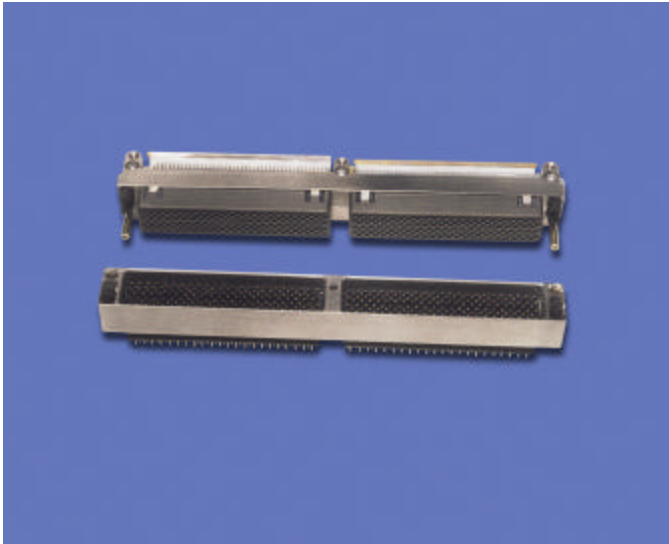


Amphenol Aerospace

LRM Surface Mount Connectors Featuring the Amphenol B³ Contact for Modular Avionics Architectures



Designed to meet the high density needs of today's integrated electronics modules, this Straddle Mount connector uses the Amphenol Bristle Brush contact which has been proven in military avionics packages and meets the requirements of Mil-C-55302. The low mating force, extended service life and stable electrical performance of the Brush contact allows this product to provide the high level of performance demanded by today's Line Replaceable Module (LRM) applications.

LRM Connector Features

- GEN-X
 - 472 Contact Pattern - .075 inch spacing along the row with .060 inch between rows, offset .0375 inch (mating face)
- Staggered Grid
 - 360 Contact Pattern - .100 inch spacing along the row with .050 inch between rows, offset .050 inch (mating face)
- ESD Protection
 - These connectors utilize the Faraday Cage principal to shunt electrostatic discharge events to the conductive enclosure on which the connector is mounted, thus never allowing the high voltage, high current discharge event to reside on any contacts. See Product Data sheet No. 177 for more information on ESD protection.
- Termination versatility
 - Module Gen-X .0375 between leads
 - Module Staggered Grid .025 between leads
 - Backplanes - Through hole solder tails, solderless compliant tails/wrap; length & finish options available
- Polarization keys (Up to 4096 possible keying positions)
- PCB/Heat Sink Accommodations
 - Wide range of combinations available
- Serviceability
 - Backplane contacts are front replaceable
- Low Mating and Unmating Forces
 - 1.5 oz. Per contact (typical)
 - 70% to 90% lower than conventional pin and socket contacts
- Vibration
 - Superior performance under vibration
- Brush Contact Durability
 - 20,000 cycles of mating and unmating
- "Hybrids" available – Mix signal with power, RF or Fiber Optics